

DECKER

Because efficiency matters

System solutions for surface technology.

Electroplating · Pickling · Anodizing · Phosphating · Crack Detection
Silicon · Selective Coating · Retrofit
Automation · Service · Barrels and Pickling Racks



Because efficiency matters

System solutions for surface technology.

DECKER is a leading global manufacturer specializing in wet chemical surface treatment plants. We provide our customers with comprehensive solutions that go far beyond standard plant construction.

We develop customized processes and automated loading and unloading systems, while offering quality control, logistics, and process documentation as part of an all-in-one package.

Furthermore, in collaboration with our partners, we deliver solutions for water treatment, exhaust air purification, and the regeneration of operating materials. This allows us to provide 'complete solutions from a single source' for the maximum benefit of our customers – that is what we at DECKER stand for.

Plant engineering



Silicon Etching



Automation



Retrofit



Accessories



Service



Plant engineering.

Need-based concepts developed with foresight.

For more than 60 years Decker has been developing and manufacturing systems for various types of surface treatment, individually and optimally tailored to your needs. We place a high value on operational safety as well as on plant concepts that allow economical and environmentally friendly production.

This brochure presents a range of systems that we have implemented for leading clients, including solutions for general cargo, bulk goods, goods on racks, and goods in baskets and drums.

Discover our range of electroplating system solutions and integrated plant concepts. These integrate surface treatment directly into existing production and logistics processes, taking material flow, loading and unloading, and interfaces with upstream and downstream processes into account. The result is equipment that functions as part of a seamless value chain, rather than operating in isolation.

- Electroplating
- Passivation
- Pickling
- Anodizing
- Cleaning
- Phosphating
- Selective coating
- Crack detection



System types

- Fully automated plants
- Integrated plants
- Compact plants
- Manually operated plants





Plant engineering | Electroplating (Zn-Ni)

Zinc-nickel plating machine with a well-designed system concept.

Large in scale, compact in design.

In just 17 months, DECKER completed construction of one of Europe's largest zinc-nickel plating facilities. The electroplating production line, designed primarily for high-quality corrosion protection—including zinc and zinc-nickel coatings along with subsequent passivation—covers an impressive 80 x 18 meters.

With a media volume of approximately 400 m³, including 220 m³ of active bath, it was clear early on: These dimensions require an innovative solution to optimize the footprint. The plant is designed for high throughput and customized to meet the customer's specific needs.

Key facts:

- 13 transport carts
- 2 lines
- 6 loading/unloading stations with telescopic technology
- 2 infeed stations
- Elevated system with 2 levels
- Intelligent refrigeration concept



Fully automated plants

Customer benefits:

- Open Logistics Area
- Implementation time of just 17 months thanks to detailed planning and a high in-house production rate
- Space-saving layout
- A well-designed anode maintenance concept reduces maintenance requirements



Plant engineering | Electroplating (Zn-Ni)

Plant highlight for aviation technology.

Plant for a coating system in the aerospace industry.

Fully automatic plant for an innovative coating system in the aerospace industry. Extensive automated process control in the baths as well as chemical preparation and high circulation rates ensure consistent product quality.

Key facts:

- Combination of an automated system for coating large parts, a manual system for stripping, and a manual system for coating small parts
- Media flow into the part carriers via a special docking system
- Adjustable zinc dissolution rate

Fully automated + manually operated plant

Customer benefits:

- Everything from a single source and perfectly coordinated: plant, water, wastewater, exhaust air, supply air, chemical supply, hot water distribution, etc.
- Energy savings through heat recovery
- Easy access for maintenance
- High process stability / Close process monitoring





Plant engineering | Cleaning

Cleaning and passivating line for aluminium parts.

Maximum capacity in a minimal footprint.

This cleaning system is designed to prepare aluminum parts for welding in the automotive industry. During the design phase, we focused on maximizing throughput while minimizing operating costs—tailored to the customer’s specific needs. Ensuring smooth process flows through the efficient arrangement of components within the system was also a key factor in its development.

Key facts:

- Elevated system with 2 levels
- 2 lines
- 6 transport carts
- 6 loading/unloading stations
- Integrated heat recovery

 Fully automated plants

Customer benefits:

- Open logistics area
- Space-saving layout
- Energy savings through heat recovery
- Consistent product quality thanks to highly automated process control in the baths, chemical treatment, and high circulation rates





Plant engineering | Anodizing

Anodizing line for decorative aluminum parts.

Decorative coating united with optimized corrosion protection.

DECKER supplied a large-scale anodising plant to the automotive supply industry. This complex system's effectiveness is evident in the decorative coatings it produces, which provide optimum corrosion protection. When coating aluminium vehicle trim components, it provides a flawless finish that lasts. It also conserves valuable resources by reducing water consumption, among other things.

Key facts:

- 2 lines
- 8 transport carts
- Very large storage area
- Loading and unloading stations with a lift to the logistics area
- Smart washing technology

Fully automated plants

Customer benefits:

- The system can operate for long periods using stored water
- Reduced water consumption
- Loading/unloading area separated from the system area





Plant engineering | Crack detection

Pickling and crack detection system for forged aluminium parts.

Large-scale facility for the automotive industry.

DECKER has developed a sophisticated concept for a pickling and crack detection system for aluminium forgings produced in small batches. Designed for confined spaces, the system combines two production lines with an efficient, clearly structured material handling system. Transport trolleys with integrated tilting mechanisms and separate crack-testing booths ensure consistent and safe handling of components throughout the process.

Key facts:

- 2 lines
- 4 transport carts
- 2 crack inspection booths
- Transport carts with tilting mechanism

 Fully automated plants

Customer benefits:

- Space-saving design
- Intelligent drying concept
- Automatic emptying of scooping components





Plant engineering | Selective coating

Selective coating system with a modular design.

Targeted coating instead of full immersion.

With its fully automatic selective coating system, DECKER has developed a system concept that replaces the complete immersion of components with significantly reduced chemical costs and maximum process efficiency. This system specifically applies chemicals only to the areas requiring treatment. By eliminating the need for full immersion, chemical consumption and wastewater generation are significantly reduced while ensuring stable, fully automatic operation. The modular design of the system allows for flexible adaptation to changing throughput requirements and different part geometries.

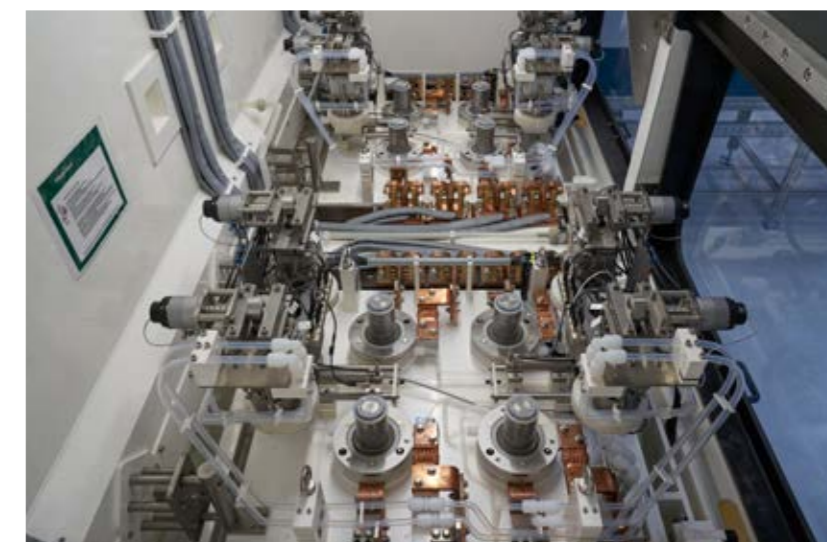
Key facts:

- Selective coating
- Modular design
- Fully automatic component recognition via DMC code readers
- Exceptionally uniform coating results

Fully automated plants

Customer benefits:

- Significantly reduced media consumption and lower wastewater generation
- Lower operating and disposal costs
- High process reliability through targeted treatment of the relevant surfaces
- Flexible adaptation to new parts and throughput requirements





Plant engineering | Phosphatizing

Line for phosphatizing and coating with nano particles.

Integrated plant engineering – because efficiency is key.

DECKER has developed a fully automatic, combined system for degreasing, rinsing, pickling and phosphating or applying a nanoceramic coating to components made from various materials. The intelligent design of the phosphating baths allows for straightforward and secure cleaning, ensuring the system operates stably and requires minimal maintenance.

Key facts:

- Combined drum-rack system
- 4 transport carts
- Semi-automatic drum loading station
- Intelligent cleaning system for the phosphating baths

 Fully automated plants

Customer benefits:

- Very short delivery time of 6 months from order placement
- Reduced maintenance requirements
- Space-saving and maintenance-friendly layout





Plant engineering | Cleaning

Blisk cleaning system for maximum process reliability.

Consistent quality with minimal staffing requirements.

The blisk cleaning system, custom-designed to meet the customer's specific requirements, is engineered for highly sensitive turbine and compressor blades. The system combines vertical processing, automated loading, and fully automatic drying into a stable, reproducible overall process. All process steps—from hanging the blisks to cleaning and drying—are logically arranged within a limited space, ensuring gentle component handling while maintaining high process reliability. Modular assemblies and defined interfaces also allow for the system to be relocated at a later date.

Key facts:

- Fully automated processes: from loading the blisks to drying
- Industry: Aviation, Engine Manufacturing
- Location: Germany
- Dimensions: 18 x 7 x 6 m (LxWxH)
- Loading station with user-specific height adjustment
- Compact design, optimal use of space

Fully automated plants

Customer benefits:

- Fully automatic suction and blow-out station for blind holes
- Combined high-temperature and vacuum dryer
- Loading station with user-specific height adjustment
- Very compact design, optimal use of space



Plant engineering | Pickling

Pickling line for aluminum parts.

Compact solution: Fully automatic, flexible, reliable.

This pickling system is designed to clean and remove oxides from small parts in the automotive sector. It features automatic feeding and unloading, an absorption unit and a dosing station for all media. DECKER has implemented a fully integrated system concept that precisely coordinates all necessary processes and operates fully automatically. This pickling system is ideal for achieving clean and oxide-free surfaces on small parts in the automotive sector, and features automatic feeding and unloading, an absorption unit and a dosing station for all media.

Key facts:

- Automatic Parts Transport
- Palletizing gantry system for stacking/unstacking baskets
- High flexibility thanks to handling of wire baskets
- Transport cart mount with swivel system

Fully automated plants

Customer benefits:

- User-friendly stacking and destacking system
- Safety systems for automatic emptying of critical process baths
- Environmental protection through a fully enclosed system design
- Reduced operating costs through automation





Plant Engineering | Passivation

Passivation system with a modular design.

A high degree of prefabrication saves assembly time.

DECKER has designed an integrated system for the passivation of aluminium extrusions. This modular, fully prefabricated turnkey system significantly reduces on-site assembly and commissioning times.

This fully automatic, enclosed system can handle the loading and unloading of components directly from and into the customer's containers, and can be integrated seamlessly into existing production and logistics processes. A high-speed transport system enables high throughput, while the modular design allows for straightforward transportation and relocation.

Key facts:

- Turnkey System
- Location: Slovenia
- High throughput thanks to a fast transport system
- Enclosed system integrated into an open production environment
- Fully automatic loading and unloading into and out of customer containers

 **Integrated plants**

Customer benefits:

- Short installation time
- Seamless integration into the flow of goods and production logistics
- Reduced operating costs through automation
- The system can be easily relocated if necessary





Plant Engineering | Passivation

Passivation system for aluminum structural components.

A high degree of automation for stable and independent processes.

The wet chemical passivation plant for automotive suppliers is fully integrated into the internal value chain. It takes parts directly from the preceding process and handles them fully automatically until they are placed in customers' containers in unloading bays for collection. The plant is precisely tailored to the value-adding process, achieving maximum efficiency through a high degree of automation. Customers receive a fully coordinated complete package, including concept development, the plant itself, automation, and integrated wastewater and exhaust air treatment systems.

Key facts:

- Comprehensive logistics concept from pre-processing to customer packaging
- Location: USA
- 40 x 50 m floor space
- High degree of automation with fully automated loading and unloading
- Seamless integration into the flow of goods and production logistics



Customer benefits:

- Comprehensive Service
- High process stability and consistent quality
- Reduced costs, carbon footprint, and quality risks through on-site integration
- Long-term cost-effectiveness through reliable processes



Plant engineering | Cleaning

Passivation line for aluminum structure parts.

Efficient Cleaning – enclosed, automated, reliable

A pickling system fully integrated into the production line for aluminum structural components, featuring fully automated loading and unloading via robots. The system is fully enclosed and could therefore be installed directly in the production area. High-strength aluminum structural components for automotive manufacturing are bonded into the vehicle body. Close collaboration between vehicle developers, adhesive, chemical, and equipment suppliers is essential to achieve optimal, reproducible bonded joints.

Key facts:

- 10 transport carts
- 2 process lines and 1 storage line
- Integration into the production environment's process chain with automatic loading and unloading
- Specially developed, fully automatic gripper-changing system for handling various components



Customer benefits:

- Implementation of intelligent concepts to ensure exceptionally high operational and process reliability
- Redundancy provided by two process lines
- Process areas accessible for maintenance and inspection even during automatic operation
- Reduced media consumption thanks to drag-optimized product carriers



Plant engineering | Phosphating

Anlage zum Phosphating for steel sleeves.

Fully automatic, variable, efficient

Fully automatic phosphating system including automatic loading and unloading station. The parts are delivered on conveyor belts and, after the process, marked using embossing units and automatically placed in boxes. The phosphating baths are cleaned fully automatically at definable intervals.

Key facts:

- Fully automatic loading and unloading
- Fully automatic filtration and cleaning of the phosphating baths
- Both zinc phosphate and manganese phosphate are possible
- Indirect heating of the phosphating baths
- Minimized wastewater generation through treatment via an evaporator

 **Integrated plants**

Customer benefits:

- A complete package from a single source
- Reduced maintenance requirements
- Very low water consumption thanks to intelligent rinsing concepts and evaporator technology





Plant engineering | Phosphating

Fully automated phosphating line for steel parts.

Optimal surface characteristics. Reproduceable quality.

DECKER has developed a fully automated system for the oiling, phosphating, degreasing and pickling of steel vehicle components, featuring automatic loading and parallel unloading. Simultaneous loading and unloading of workpiece carriers enables high throughput, while the high level of automation significantly reduces long-term operating costs.

Key facts:

- Fully automated system
- Rotary product carriers with fully automated loading and unloading
- Intelligent product carrier design
- Single-row system with transport carts running along the edge of the tank



Integrated plants

Customer benefits:

- Only one operator is needed to run the system
- High throughput is possible thanks to parallel, automated loading and unloading
- Very high system availability due to automation
- Reduced maintenance requirements





Plant engineering | Pickling

Modular pickling system.

Fully automatic compact system.

Fully automatic compact system. A pickling system followed by passivation of aluminum parts for a wide range of technical and decorative applications. The compact system also includes an integrated gas detection safety system.

Key facts:

- High throughput thanks to a high-speed transport system
- 1 transport system
- 3 loading/unloading carts
- Integrated gas detection

 **Compact plants**

Customer benefits:

- Extremely compact design
- Very user-friendly loading and unloading system
- System equipped with an enclosure to maintain a clean atmosphere in the production environment
- The system can be relocated with minimal effort





Plant engineering | Pickling

Modular pickling system.

Fully automatic compact system.

Compact pickling system for slabs used in quality control for an international technology and industrial goods group, featuring a modular design. The scope of delivery includes the exhaust air system as well as the necessary equipment for media supply and disposal.

Key facts:

- Fully automated system
- 1 conveyor system
- 12 loading/unloading drawers
- Complete package including exhaust air system, dosing stations, and wastewater collection stations

Compact plants

Customer benefits:

- Particularly ergonomic operation of the loading/unloading station
- Compact system with an enclosure to protect personnel and the production environment
- Very short installation time





Plant engineering | Phosphatizing

Manganese phosphating line.

Environmentally friendly and cost saving.

Specific requirements often have to be met in plant engineering. The manganese phosphating plant is used to degrease the entire surface of the treated parts and form a fine-grained, homogeneous manganese phosphate coating on their functional surfaces.

Key facts:

- Transportation system: side runner
- Heating: Indirectly with thermal oil
- Semi automated regeneration for the phosphating sink
- Special attention to gentle washing technology

 **Compact plants**

Customer benefits:

- Minimizing the amount of exhaust air and saving energy when heating the bath
- Significant water savings through efficient washing technology
- Easier pool cleaning, lower pool volume and less space required by the system thanks to the indirect heating system
- Significant increase of maintenance intervals thanks to semi-automatic regeneration system





Plant engineering | Anodizing


Anodising plant for machined parts.

A brilliant result in a small space.

This compact, modular anodising plant is ideal for the in-house anodic colouring of a wide range of machined parts, as well as for contract work. It includes solutions for water supply and wastewater disposal.

Key facts:

- Manual system
- Complete package including exhaust air system, circulation system, wastewater collection tank, and cooling unit
- Hard anodized, various colors

 **Manually operated plants**

Customer benefits:

- A complete package from a single source
- Cost-effective system design
- Easy to use



Silicon etching.

On the edge of what is technically possible.

We provide systems capable of achieving maximum cleaning quality, pushing the boundaries of what is technically feasible. Even the most stringent surface quality requirements are consistently met, ensuring our results satisfy the rigorous standards of the semiconductor industry.

DECKER delivers more than just equipment; we provide a comprehensive solution, including the entire process. These concepts are backed by over 20 years of expertise



System solutions:

 Silicon chunks

 Silicon rods

 Silicon granulate





Silicon Etching

Silicon chunk etching plant.



Silicon chunks

The leading polysilicon chunk etching system for the highest quality.

With the DECKER poly-break etching plant you achieve the maximum possible surface quality of your silicon. In this plant you will find state-of-the-art wet-chemical technologies and concentrated technical know-how. Another advantage is its low consumption of resources: Save a considerable amount of electricity, water and chemicals.

Key facts:

- Transportation of goods in special rotating drums
- No uncontrolled reactions following the etching process
- Processes silicon for use in photovoltaics and microelectronics

Customer benefits:

- Highest possible cleaning quality
- Innovative drying concept
- Turnkey solution including the process
- High process stability
- Well-designed maintenance concept



Silicon Etching

Silicon slim rod etching plant.



Silicon rods

The intelligent system for a more efficient etching process

The highly versatile rod etching system allows you to clean all types of silicon rods. An essential feature of the rod etching system is the rotating, drum-like product carrier which allows for a particularly material and resource efficient etching process.

Key facts:

- The system combines washing and etching for all types of rods
- A fully enclosed system ensuring absolute purity
- Minimal exhaust gas emissions
- Water is reused in multifunctional rinsing tanks

Customer benefits:

- Consistently high-quality etching
- Minimum operating costs
- Saves water and electricity
- For superlative high-quality silicon
- Innovative drying concept
- Specially developed barrels
- Ergonomic loading and unloading
- Sustainable system design
- Individual Turnkey solution



Silicon Etching

Silicon granule etching plant.



Silicon granulate

Resource-efficient and cost-effective.

During the processing of polycrystalline silicon or during wafer production, a certain breakage can hardly be avoided. With the innovative recycling plant you won't lose a single gram of the valuable silicon! „Old wafers“ or broken wafers are shredded and reprocessed with the fine-grain etching plant. The capacity is up to 1.000 tons of recycled granulate per year.

Key facts:

- Fully automated crushing, etching, drying, portioning and packaging
- Targeted extraction of harmful gases followed by purification
- Essential process parameters under continuous monitoring

Customer benefits:

- Annual capacity: 60 kg/h × 6,600 h = 396 t p.a. minimum
- Delivers long-term cost savings
- Minimal use of chemicals + rinse water
- Reliable plant design
- Produces silicone of the highest quality
- Innovative drying concept
- Packaging under cleanroom conditions
- Customised turnkey solutions available



Silicon Etching

Silicon cleaning system.



Silicon chunks

Semi-automatic. Safe. Clean.

Semi-automatic system for wet-chemical cleaning and drying of large silicon pieces (sections of monocrystal rods) in baskets with a capacity of 35 kg/h. Completely encapsulated design to separate the process area from the cleanroom environment.

Key facts:

- Compact, encapsulated design
- Semi-automated handling system

Customer benefits:

- Economical compact system
- Plug & Play. The system can be brought to the site as a whole

Automation.

Innovative. Flexible. Reliable.

The automation of individual process steps or of the entire production offers advantages in many ways. Decker develops, builds and installs automatic systems for different sectors and requirements.

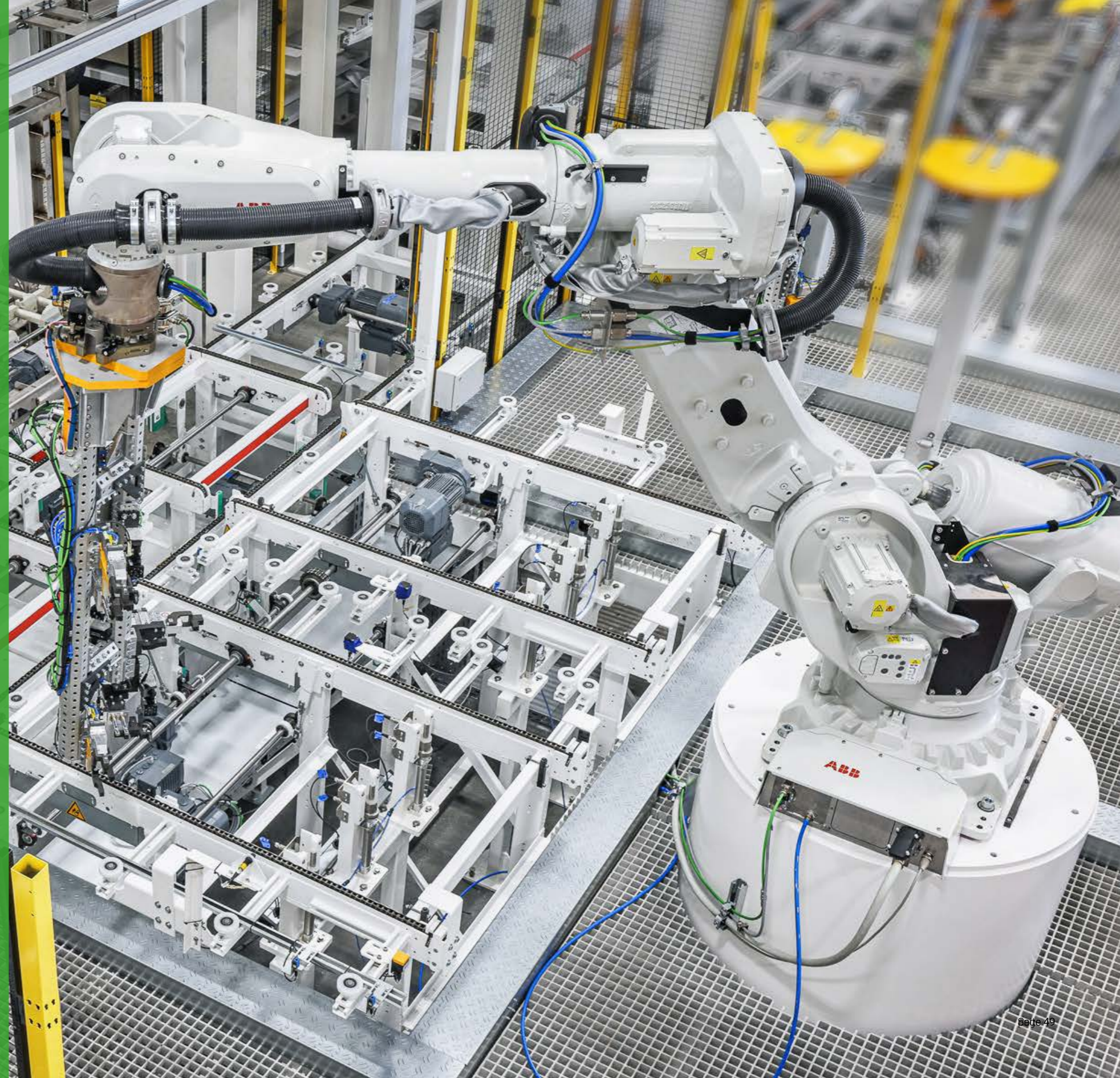
Your special requirements are our challenges!

We offer everything from simple manual workstations to fully integrated, high-performance production systems and automated loading and unloading systems. DECKER creates flexible solutions tailored to your specific requirements.



Parts handling:

↕ Automated loading and unloading stations





Automation

Automated loading and unloading stations.

As unique as your needs!



DECKER designs your entire surface treatment process, rather than just selected parts of it. You will receive a complete system, including loading and unloading units, with reliable, seamless transitions. In the context of 'Industry 4.0', the automatic loading and unloading of all kinds of production lines is becoming a significant competitive factor.

Whether you are installing a new system or retrofitting an existing one, one thing remains constant: you can always rely on DECKER's comprehensive service.



Plant redesign.

Custom-Tailored Retrofits.

Is your plant showing its age?
Do you need to adjust plant capacity to accommodate increased production volumes? Are you planning to relocate your production site?
Does your plant technology need to be adapted to meet new legal requirements?

If so, you need a reliable partner who can take a holistic view of your existing plant and plan ahead effectively. DECKER will support you throughout the entire retrofitting process, from analysing the existing setup and technical redesign to implementation, all while the plant remains in operation. Our goal is to upgrade existing plant technology in an economical way, increase operational reliability, and adapt the plant to new requirements in a sustainable manner. The result is bespoke solutions that are both technically and economically sound.



DECKER – System solution:

- ↕ Plant relocation
- ↻ Plant modernization
- ▷ Plant extension
- 📄 Documentation
- ◇ Recertification





Retrofit

We make plants fit for the future.

Making existing plants fit for the future.



↕ Plant relocation.

Dismantling and reassembling sensitive production units and entire plants requires meticulous planning, as well as precise timing and technical execution. After all, unplanned production downtime can result in substantial additional costs. We take care of your plant relocation and everything that goes with it, allowing you to focus on your core business. You can rely on our qualified specialists!



▶ Plant extension*

You can never have enough capacity. But what if your existing plant can no longer keep up with increasing demand? What if you want to incorporate additional processes? Expanding your surface treatment capabilities can help you eliminate bottlenecks and boost efficiency. Our specialists are on hand to help you identify areas for improvement and provide recommendations for optimisation. They can also show you the specific performance gains that can realistically be achieved.



↻ Plant modernization.

Just because an existing system is outdated does not mean it has to be replaced with modern technology. Overhauling the system can be a sensible and cost-effective alternative. After all, purchasing a new system is not always the optimal solution; many ageing systems and components can be upgraded to the latest technology through targeted modernisation. This means they can remain in operation for many more years.



📄 Docu-mentation.

If you make technical modifications to an existing plant, you will also need to update your documentation. Our experts will take care of this for you.



◇ Re-certification.

According to the European Machinery Directive machines and plants need to bear a CE marking for successful commissioning. We can take care of this for you.

Accessories.

System components for efficiency and the highest standards.

The broad DECKER product range not only encompasses well-thought-out plating lines and automation but also the corresponding system components that amount to your complete surface treatment package. One source for everything. Individually tailored to meet your requirements.



From us to you:

 Electroplating barrels and aggregates

 Goods carrier





Accessories | barrels

Electroplating barrels and aggregates.

As unique as your needs!



Our various drum types are characterized by:

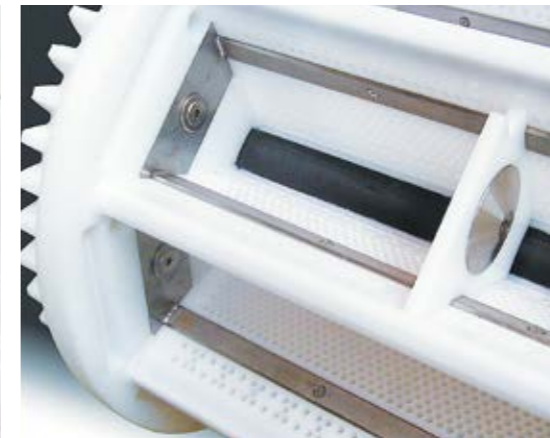
- Customized to fit your specific system
- Greater internal volume possible with the same external diameter
- Intelligent perforation design, optimized to meet your specific needs
- Reduced material carryover
- Highly wear-resistant versions available

Components & Models

- **Barrels & Lids** (one- or two-piece, manual or automated)
- **Drive & Contacts** (battery-powered, mains-powered, or frequency-controlled)
- **Units** (single or double, freely integrable)
- **Drum Shapes** round, polygonal, 5- to 7-sided

Types of drums

- Cable contact barrel
- Strip barrel
- Fan barrel
- Jumbobarrel
- Available with or without a power unit

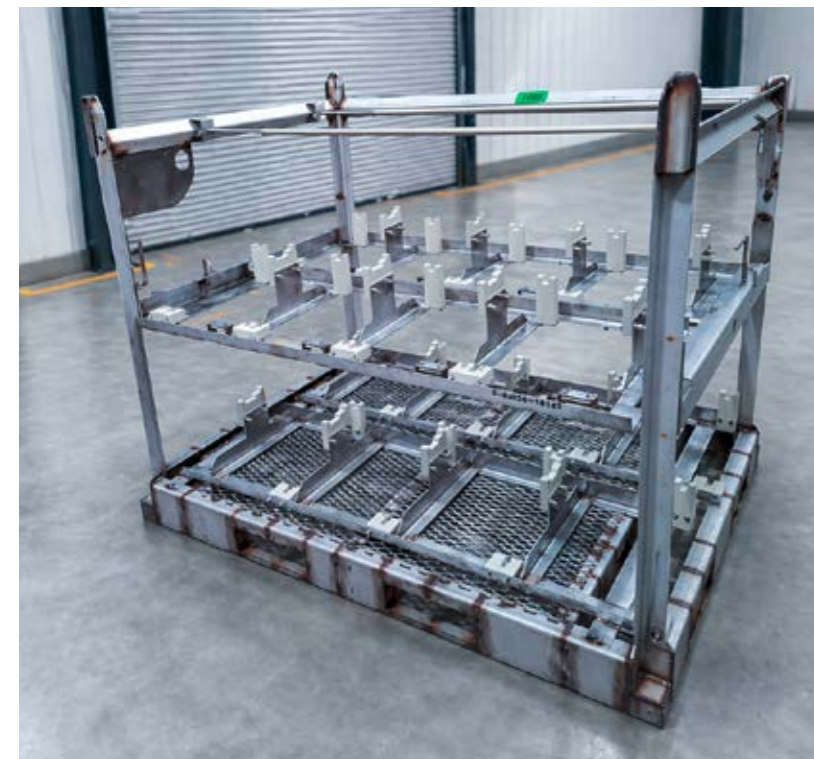




Accessories | Cargo Racks

Pickling racks.

Product carriers for pickling and passivation systems.



- DECKER develops and manufactures product carriers that can be used in your wet chemical processing plants and in logistics beyond.
- We assess your requirements (components, plant specifications, automation) and develop a suitable solution based on them.
- For all types of plants, worldwide.
- In doing so, we place special emphasis on optimal adaptation to the process requirements of a wet chemical plant.
- Minimum order quantities: 20 units

Let's discuss together whether these custom components can provide significant added value for your plant.



Service.

DECKER Anlagenbau is an active partnership.

We are pleased you chose DECKER. To keep your processes stable, we provide comprehensive service throughout your equipment's entire lifecycle. We apply our technical expertise to both DECKER systems and third-party equipment, offering support regardless of the manufacturer.

The core of your reliability is professional system maintenance, which ensures availability through customized plans and thorough documentation. This is paired with proactive spare parts management, providing tailored packages of standard and custom parts to minimize downtime.

All measures are based on a precise on-site technical assessment. Our experts systematically evaluate your equipment's condition to provide a clear basis for any necessary actions. This supports the stability and security essential to your success.



Service means:

-  Equipment Maintenance
-  Spare Parts Management
-  Inventory Management





Service

Reliability for your plant engineering.

Reliable production: Greater reliability. Better service.

Downtime for your surface treatment equipment is not an option? Are you looking for the security of preventive maintenance instead of costly repairs? Do you want to safeguard your investment for the long term and professionally manage mandatory inspection cycles?

Support, spare parts and stock-taking, all from a single source. For you everything at a glance - everything under control. Because you need a partner who understands processes as well as building machines. We provide the stability and reliability that you need to succeed.



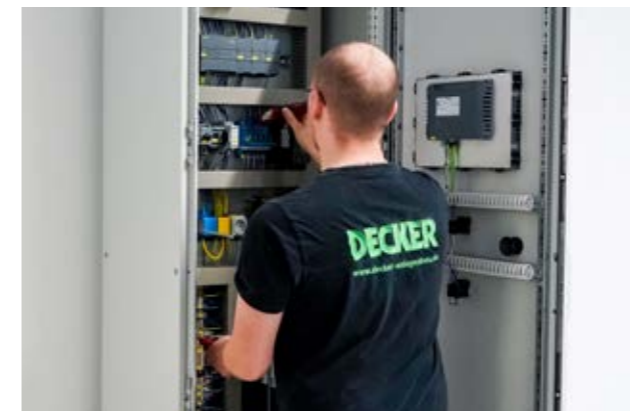
Support for spare parts.

A reliable supply of spare parts is crucial for plant operations—even for third-party systems. After conducting a detailed inventory, we put together a customized spare parts package. In addition to standard components, we also take into account any custom-made parts required to minimize downtime as much as possible.



Facility Management.

We provide reliable maintenance for your equipment—including third-party brands. We begin with a structured assessment of your current setup, which we use to develop a customized maintenance plan. This ensures the long-term availability of your equipment. All measures are thoroughly documented and made available to you at any time in a high-quality format.



Status report.

During the initial assessment of your existing plant, we will systematically record its technical condition. Based on this, we will draw up a list of recommended actions, clearly assessing critical issues and areas requiring attention. Our specialists carry out the analysis in a practical manner directly at your site.

About us.

This is DECKER.

DECKER is a leading international supplier of innovative, reliable accessories for wet chemical and electroplating processes, and automation and assembly technology. We work with clients in the semiconductor, automotive, electronics and consumer sectors.

With its roots in the foundry trade, our company looks back on a successful tradition spanning more than 125 years.



From us to you:

- + Customer-focused
- + Committed and dedicated
- + Conserving resources
- + Guaranteed quality through in-house production





Company

The world of surface treatment.

Wet chemical solutions in the international spotlight

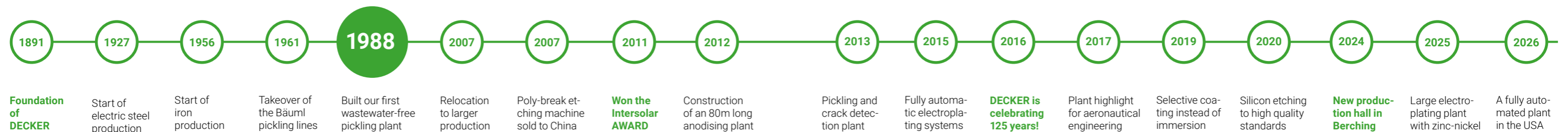
DECKER has many years of experience in electroplating. As early as 1961, the company entered the plant and equipment engineering sector by producing its own pickling systems. Design, manufacturing and sales are closely interlinked within our organisation. This provides the ideal conditions for the continuous growth and further development of our extensive product portfolio.

Efficiency is key.

Cleaning and finishing high-end products is challenging for plant engineers and manufacturers. The fundamental design principles for every new plant are purity, consistent process conditions and reliable technology.



Outstanding milestones in the company's long history





Our aim is to provide uncompromisingly high-quality products and services worldwide while keeping operating costs as low as possible. Our skilled team strives to achieve this ambitious goal day in, day out, with ingenuity, pragmatism and enthusiasm.

We are a sought-after provider of plant engineering services for surface treatments, including anodising, blackening, phosphating, chromating, electroless nickel plating, zinc plating and Silicon etching.

We are also your partner for plant conversions, modernisation, relocation and automation of existing and new plants.

DECKER Anlagenbau GmbH

Wegscheid 1a
92334 Berching

T +49 (0) 8462 200 617 - 0

M info@decker-anlagenbau.de



decker-anlagenbau.de